

# **MISSION NEEDS EVALUATION TEAM**

## **GOAL:**

Empower members of CUMC to make a fact-based and faith-inspired decision on a church facility to carry out its ministries.

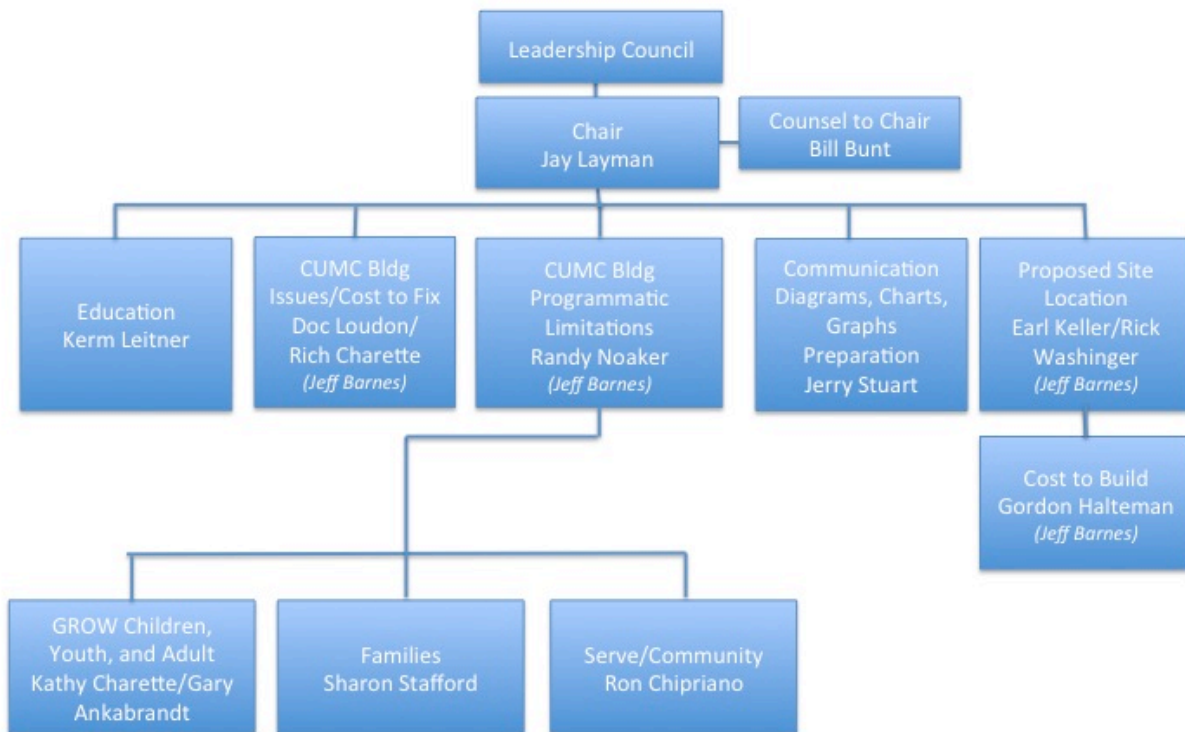
## **GUIDING PRINCIPLES:**

- The Holy Spirit will provide what we need to make this decision - if we pray, ask for guidance and trust in what we discern from what is revealed to us.
- Starting this process asking the question “How much is it going to cost us” will not get us to the “Promised Land” nor enable us to carry out our mission in this community.
- The question before us is not simply “Do we stay here or move” but rather “Where shall we locate our physical presence and in what type of facility in order to fulfill Jesus’s admonition to serve others and make disciples in the Carlisle community?”
- This process and our decision must be guided by our faith and not by our fears.

## **DEFINING OUR TASK:**

1. Where are we now in our journey at CUMC?
2. Where are we being called to serve?
3. What do we need to do to fulfill this calling?
4. What’s holding us back or obstructing our path forward?
5. What are our fears about moving forward and how do we mitigate them?

# MISSION NEEDS EVALUATION TEAM



MISSION NEEDS EVALUATION TEAM